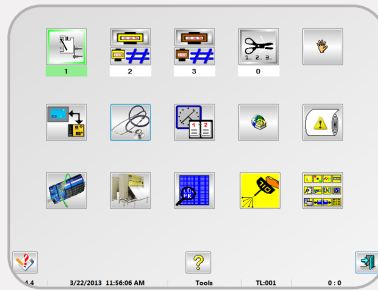


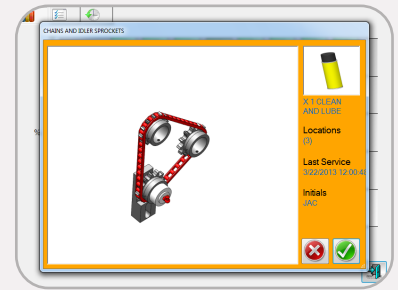
Paragon M+ and V16 Options

New Optional Productivity Tools

Maximize the productivity of your Gribetz Paragon® or V16™ quilter with new optional equipment. Improve your daily throughput and keep your equipment running longer.

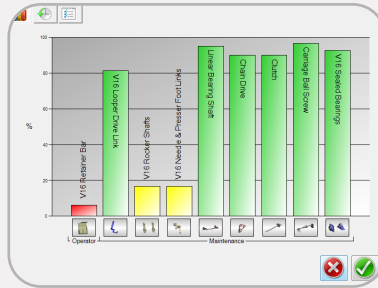


Language-independent icons for maintenance tasks.



Informative guides on the machine for maintenance operations.

New Gribetz Preventative Maintenance software can help you keep your machine properly maintained for optimized productivity and extend the life of your machine. Innovative Gribetz quilting technology can increase your daily production by up to 25%. Revolutionary software dynamically sews patterns quicker and more accurately than ever before. Produce intricate Tack & Jump® or Continuous patterns and still keep up with your production schedules.



Visual charts to track and alert you of maintenance status.

Date	Initials	PartID	Serial	Model	Description
3/22/2013 12:00	JAC		4999	V16	Test
3/22/2013 12:00	JAC	Chain Drive	4999	V16	CHAIN AND ELDER SPROCKETS
3/22/2013 11:59	JAC	Carrage Ball Screw	4999	V16	CARRIAGE BALL SCREW
3/22/2013 11:59	JAC	V16 Sealed Bearings	4999	V16	SEALED PELLOW BLOCK AND FLANGE B.
3/22/2013 11:57	JAC		4999	V16	Test
3/22/2013 11:53	JAC		4999	V16	Test
3/22/2013 11:53	JAC	Carrage Ball Screw	4999	V16	CARRIAGE BALL SCREW
3/22/2013 11:53	JAC	V16 Sealed Bearings	4999	V16	SEALED PELLOW BLOCK AND FLANGE B.
3/22/2013 11:53	JAC	Chain Drive	4999	V16	CHAIN AND ELDER SPROCKETS
3/22/2013 11:53	JAC	Linear Bearing Shaft	4999	V16	CARRIAGE LINEAR SHAF TS
3/22/2013 11:53	JAC	V16 Needle & Presser	4999	V16	NEEDLE AND PRESSER FOOT DRIVE LL
3/22/2013 11:53	JAC	V16 Looper Drive Link	4999	V16	LOOPER DRIVE CONNECTING LINKS
3/22/2013 11:53	JAC	V16 Sucker Shafts	4999	V16	ROCKER SHAF TS AND UPPER BUTTE
3/22/2013 11:53	JAC	V16 Retainer Bar	4999	V16	RETAINER DRIVE NUTRATOR INSERTS
3/21/2013 3:02 PM	GSG	V16 Retainer Bar	4999	V16	RETAINER DRIVE NUTRATOR INSERTS
3/21/2013 3:02 PM	GSG	V16 Looper Drive Link	4999	V16	LOOPER DRIVE CONNECTING LINKS
3/21/2013 3:02 PM	GSG	V16 Rocker Shafts	4999	V16	ROCKER SHAF TS AND UPPER BUTTE
3/21/2013 3:02 PM	GSG	Linear Bearing Shaft	4999	V16	CARRIAGE LINEAR SHAF TS
3/21/2013 3:02 PM	GSG	Carrage Ball Screw	4999	V16	CARRIAGE BALL SCREW
3/21/2013 3:02 PM	GSG	V16 Sealed Bearings	4999	V16	SEALED PELLOW BLOCK AND FLANGE B.

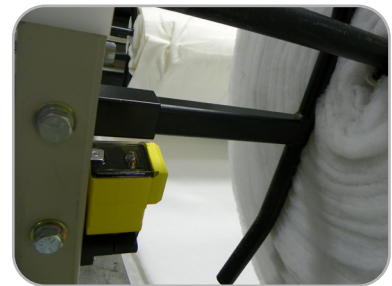
Maintenance logs to automatically document machine service.



No tools necessary for Quick-set Paddle Brakes – easy hand adjustments keep your production moving.



Sturdy new bag closer rail system splices materials quickly and efficiently.



Wireless, remote material run-out sensors – no cords or tangles.

Global Systems Group® (GSG) is a collection of the world's leading mattress machinery companies. These GSG machinery companies represent leading-edge technology in computerized quilting machines and panel cutters, automated and conventional sewing machines, material handling solutions, and mattress-packaging equipment.

800-343-8138 • 417-237-6254 • GSGcompanies.com



A DIVISION OF LEGGETT & PLATT

131 Zapletal Way
Carthage, MO 64836 USA

